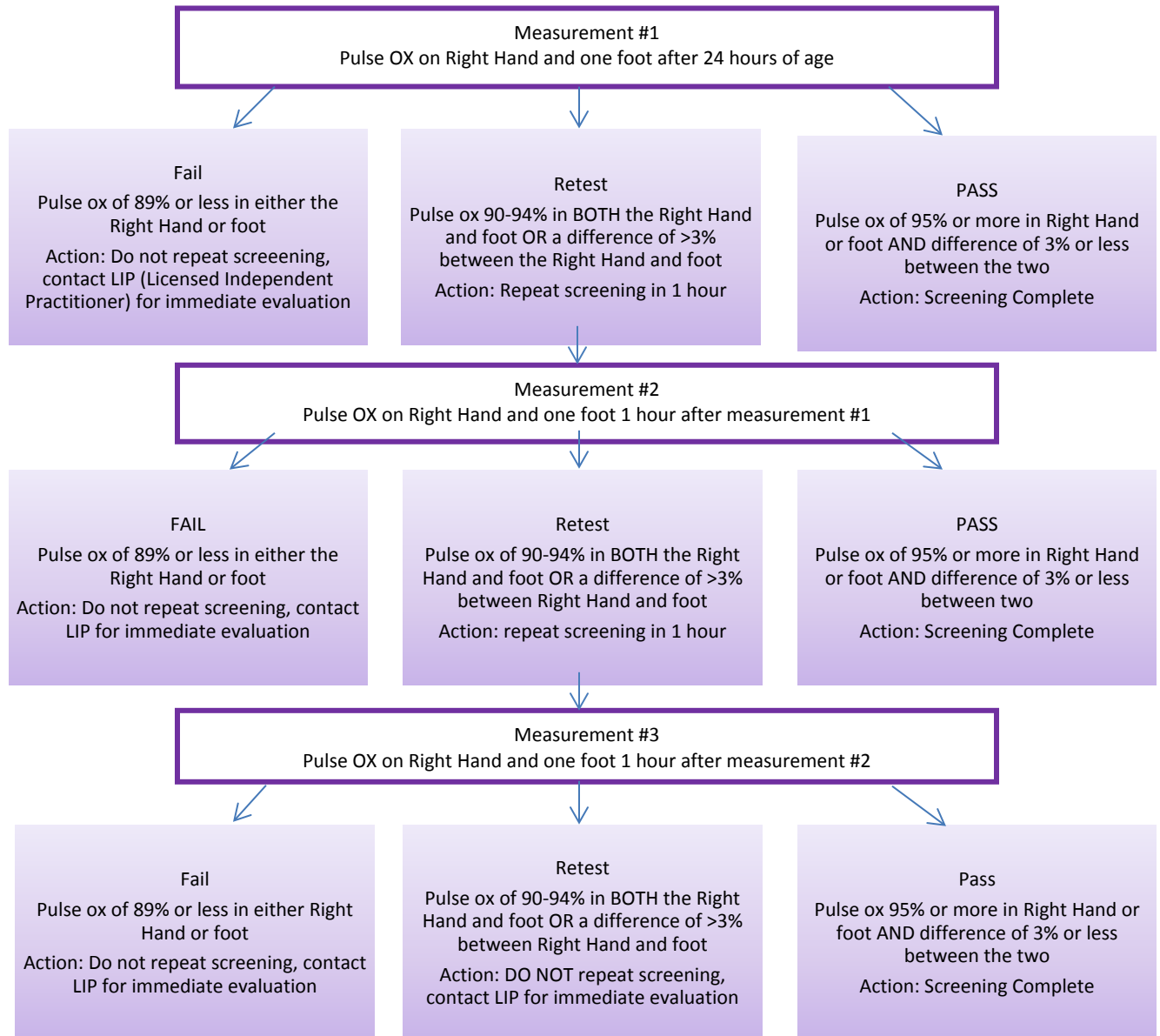


Newborn Universal Pulse Oximetry Screening Algorithm

1PC.WC.0001.01

Newborn ≥ 35 weeks and > 24 hours of age



IF highest saturation is:	Lowest saturation must be at least:
100%	97%
99%	96%
98%	95%
97%	94%
96%	93%
95%	92%

For symptomatic newborns discontinue screening and notify provider immediately.